

Installation & Safety

Congratulations!

on the purchase of your pleated blinds from Window Fashion.

These blinds have been custom-made in Germany, using only high-quality materials to your precise specifications.

Please follow the installation and care instructions given below to ensure an excellent fit and a long life for your pleated blinds.

We wish you every enjoyment and success with your new blinds.

P1751

P1741

P1740



Please read the following advice carefully prior to installation

Improper installation can cause injury. Blind must be installed according to instructions, using the supplied and/or specified components.



Screws for installation are NOT supplied with this blind. Please ensure that blinds are installed using screws with sufficient holding force and suited to the material/composition of window components.

Safety for cord-operated blinds



Blind safety

Blinds with long, unsecured cords are a strangulation hazards for children. Blinds must be installed in accordance with Australian mandatory product safety standards for Corded Internal Window Coverings.

Our cord-operated blinds are especially child-safe thanks to the Sensuna kids care cord breaker which releases the cord loop if under pressure or pulled apart.

Additionally, this blind is supplied with two tie-down cleats to be fixed to the wall. Use these to anchor the pull-cord.



Tie-down cleats must be installed at least 1.6 metres above floor level.



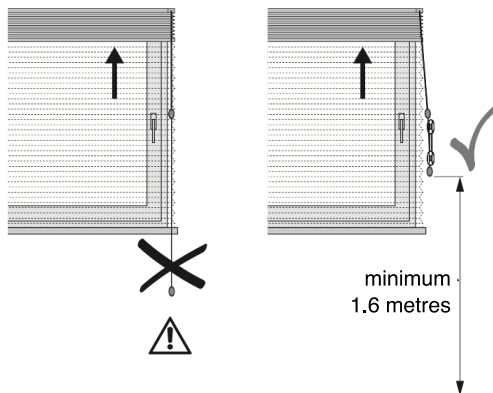
Warning labels supplied with blinds must not be removed.



Keep furniture, especially beds and babies' cots, away from windows, and ensure that blind cords are secured out of reach.

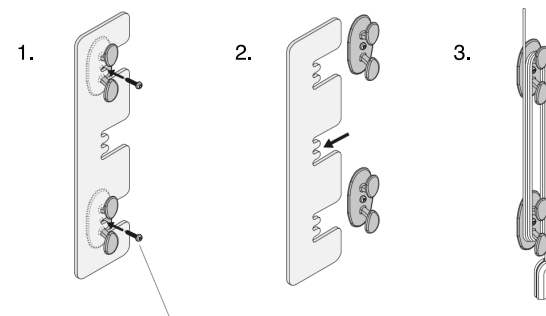


Never tie loose cords together; ensure that cords do not form a loop.



Safety for cord-operated blinds

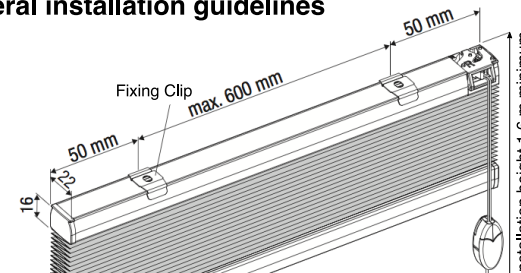
Blind safety: installation of tie-down cleats



Recommended screws: DIN 7981 3.9 x 16 mm (for timber or uPVC windows)

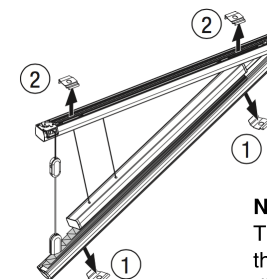
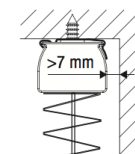


General installation guidelines



Install Fixing Clips 50 mm from each end of the rail, and with a maximum spacing of 600 mm between clips.

Fixing Clips should preferably be installed with the flap facing forwards (towards the room); this ensures that the blind can easily be taken down. Fixing Clips may only be installed with the flap towards the window (shown on right) if the distance between the clip and the window is at least 7 mm.



Note for installation of blind P1741: Attach lower (diagonal) fixed rail first (1), then attach upper (horizontal) rail (2).

Note for installation on timber surfaces: Timber is a natural material. Ensure that hardware is installed with sufficient distance to edges, to avoid splitting or splintering. Pre-drilling is recommended.

Installation & Safety

Installation on architrave or wall (Face mount)

and

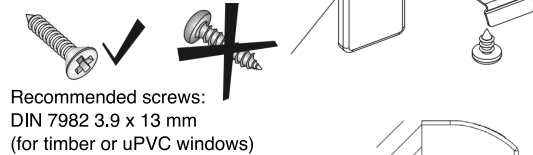
Installation on window frame sash (Window mount)

Mounting hardware: Face Brackets + Fixing Clips

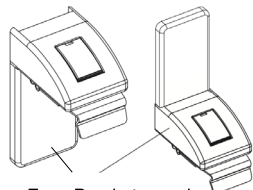
Position Face Brackets and tighten screws carefully.

Slide on bracket covers.

Attach Fixing Clips to Face Brackets with supplied screws.

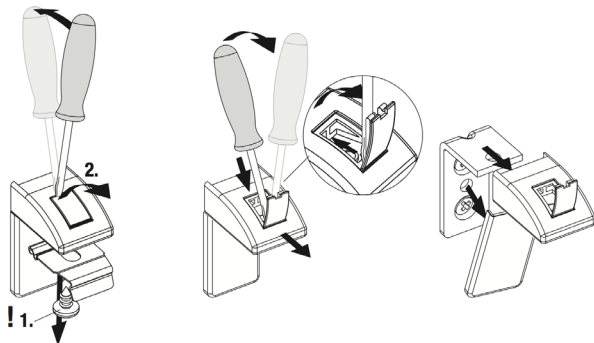


Insert the edge of the blind rail diagonally into the clip recess, then straighten upwards until the rail 'clicks' into place.



Face Brackets can be installed with legs turned upwards or downwards.

Dismantling: Remove the blind rail from the Fixing Clips by pushing the flaps upwards, then dismantle the Face Brackets as described below.



Installation instructions (oddly shaped windows)

Installation inside window reveal (Recess mount)

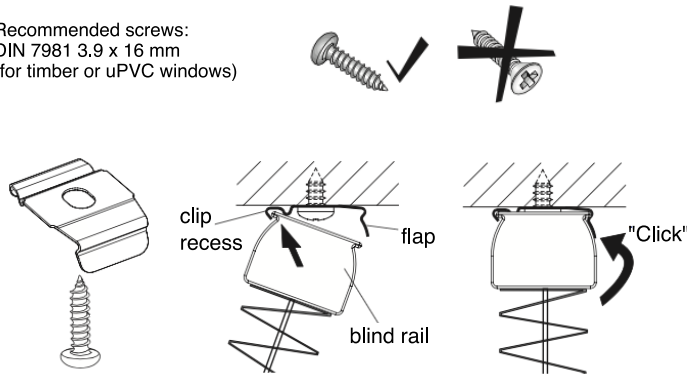
and

Installation in the glazing bead (Window mount)

Mounting hardware: Fixing Clips

Attach Fixing Clips to window reveal or glazing bead with spacing as recommended above. Glazing bead requires minimum depth of 25 mm.

Recommended screws:
DIN 7981 3.9 x 16 mm
(for timber or uPVC windows)



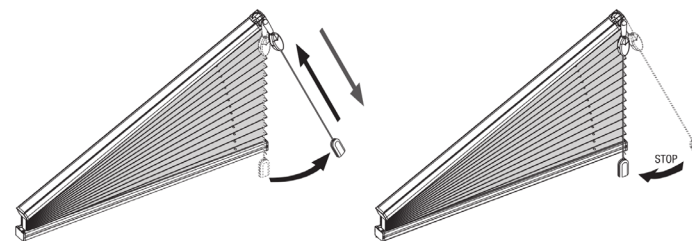
Insert the edge of the blind rail diagonally into the clip recess, then straighten upwards until the rail 'clicks' into place.

Dismantling: push the flaps upwards to remove the blind rail from the Fixing Clips.

Blind operation (P1740)

To open and close blind: pull cord towards room at tassel (releases blind), and raise or lower blind.

To stop blind: bring tassel/cord to vertical position.

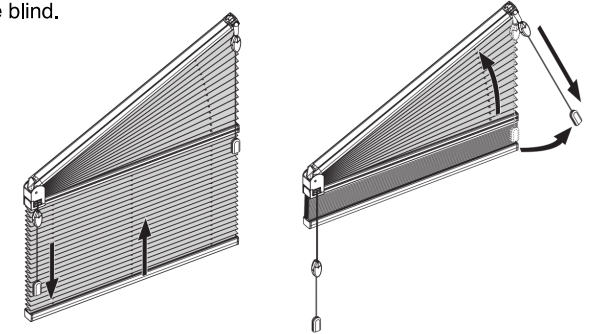


Installation instructions (oddly shaped windows)

Blind operation (P1751)

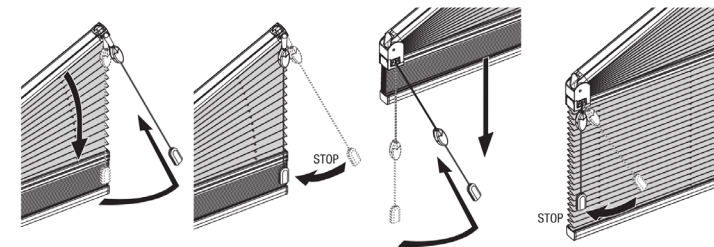
To open blind:

1. Lower section: pull cord downwards at tassel.
2. Upper section: pull cord towards room at tassel (releases blind) and raise blind.



To close blind:

1. Upper section: pull cord towards room at tassel (releases blind) and lower blind.
2. Lower section: bring tassel towards centre of blind (releases blind) and lower blind.



To stop blind: bring tassel/cord to vertical position.

Blind operation (P1741)

To open blind: Pull cord downwards at tassel.

To close blind: Pull tassel towards centre of blind and guide cord diagonally upwards.

